

TDL-1RB

TROJAN
DEVELOPMENTS

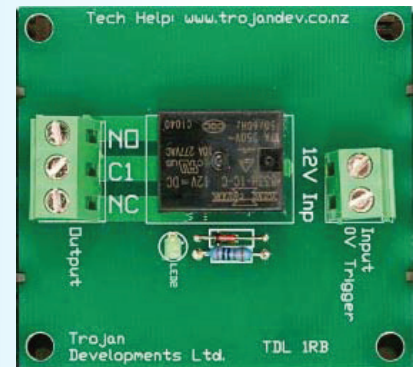
One Way Relay Board

The TDL-1RB is an 8 Amp Relay Board. It has 1 x 12Vdc input that switches a single pole double throw relay.

Also designed to fit the TDL Mounting Base.

Features:

- ▼ Contact rated at 8 Amps AC/DC
- ▼ Fits TDL-MB mounting base
- ▼ Modular unit that can be used to switch a number of devices
- ▼ Designed to be used as an interface between a low current switching control board and a high powered lock
- ▼ LED to indicate relay status
- ▼ Rising clamp type terminals will not damage cables and can accommodate up to a 2.5mm² (14AWG) cable



Specifications:

- ▼ Single way Relay Board
- ▼ Operating Voltage 9 to 16Vdc - 38mA at 13.6 Vdc
- ▼ 12Vdc negative trigger input
- ▼ Single Pole Double Throw relay
- ▼ Contacts rated at 8 Amps AC/DC
- ▼ Dimensions: 55mm (w) x 60mm (h) x 23mm (d)

Product code:

- ▼ TDL-1RB

▼ www.trojandev.co.nz

▼ sales@trojandev.co.nz



developing innovative egress solutions since 1987